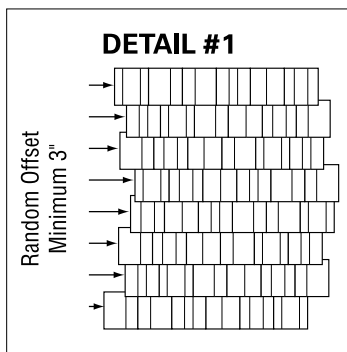


Cedarlite® 600 and Madera 700/900

STAGGERED INSTALLATION INSTRUCTIONS

Cedarlite® 600 and Madera 700/900 roof tiles are not specifically designed for staggered applications, but they may be installed in a staggered pattern by following these instructions.



Cedarlite® 600 and Madera 700/900 roof tiles have four different shake detail patterns and it is suggested that they be applied in a random, broken-bond with a minimum 3" offset (see detail #1) between the side laps of adjacent courses. **Side laps in alternate courses shall not be in direct alignment.**

Standard course spacing for Cedarlite® 600 and Madera 700/900 tiles installed in straight courses is with a 10 inch exposure. For the staggered applications, the exposure and the course spacing must be reduced by 1 inch to 9 inches.

Each tile that is installed prior to the recessed tile requires cutting two areas of each lower hanging tile as described below:

- Cut off the small water stop at the top of the under lock/ water channel. This allows the adjacent tile to slide up without presenting a potential point load break when walking on the tiles. (Figure 1)
- Cut 1" off the lower end of the under lock section of the roof tile. This requires two cuts: (Figure 2)
 1. Cut off under-lock/water channel from out-side edge the width of the Under-lock/water channel
 2. Cut along the longitude vertical under-lock/water channel to remove section.



Figure 1

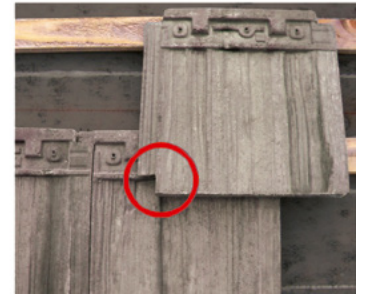


Figure 2

When determining the total number of tiles required for this method of installation, it is recommended to add 5% to 10% additional material per inch of stagger.

When installing Cedarlite® 600 and Madera 700/900 roof tiles on the Elevated Batten System® (EBS) or on a counter-batten system, a 1" x 3" batten is required.

The two photos below show the cut tile in a 1" staggered tile pattern. (Figures 3 and 4)



Figure 3



Figure 4

Walking on or traversing the roof tiles may cause breakage to the nose ends that protrude beyond the support areas of the tiles below. Minimize walking on the installed Cedarlite® 600 and Madera 700/900 tiles by completing all installation steps as you go.